



Cal Sailing Club

Racing Course Diagrams

v2023-03

Introduction

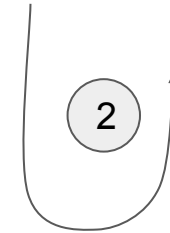
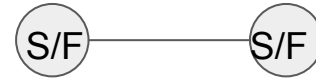
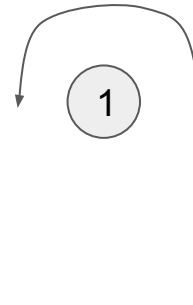
- a. Each slide indicates a possible layout of buoys. A variety of courses can be sailed on each layout.
- b. CSC usually uses temporary buoys for all racing marks. These are orange, inflatable, and 2-3 feet in diameter (pictured top right)
- c. The electronic starting horn buoy, Ollie, (pictured bottom right) may also be a mark, usually as one end of the starting line.
- d. All marks are to be left to port unless otherwise specified (eg. a gate)
- e. These courses are modified from courses listed in appendix S of [RRS2021](#). Modifications are intended to accommodate smaller fleets and use fewer buoys.



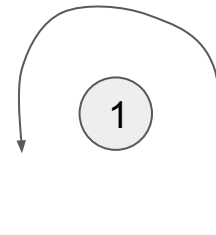
1. Windward-Leeward

Courses:

- a. Start-1-2-Finish
(windward finish)
- b. Start-1-2-1-Finish
(downwind finish)



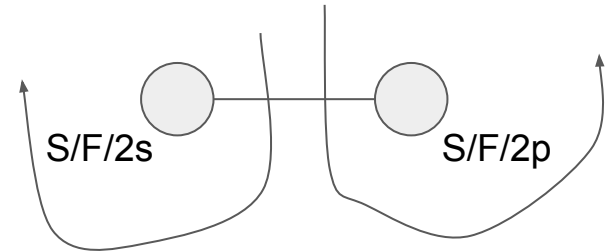
2. Windward-Leeward, leeward finish



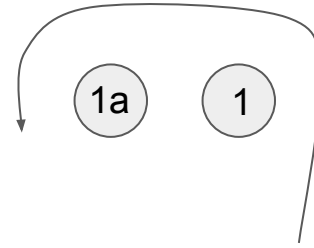
Courses:

- Start-1-Finish
- Start-1-2s/2p*-1-Finish
- Start-1-2s-Finish (hook finish)

*to sail the course you must pass through the gate placing the 2p on port and 2s on starboard

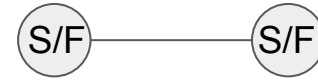


3. Windward-Leeward, with offset



Courses:

- Start-1-1a*-2-Finish (single lap)
- Start-1-1a-2-1-1a-2-Finish (two laps)
- Start-1-1a-2-1-1a-Finish (single lap, downwind finish)



*1a is the “offset mark” aka “spreader mark”

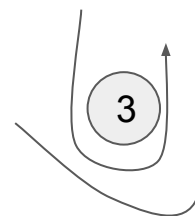
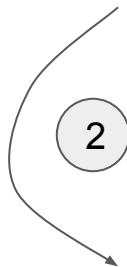
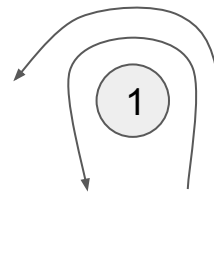


4. Triangle

Courses:

- a. Start-1-2-3-Finish (triangle)
- b. Start-1-2-3-1-3-Finish (triangle-sausage)
- c. Start-1-2-S/Fs*-3-Finish (“figure four”)

*Round the port mark of the starting line to starboard



5. Leeward Triangle

1

Courses:

2

- a. Start-1-2-3-1-Finish
- b. Start-1-2-3-1-3-1-Finish

3

